



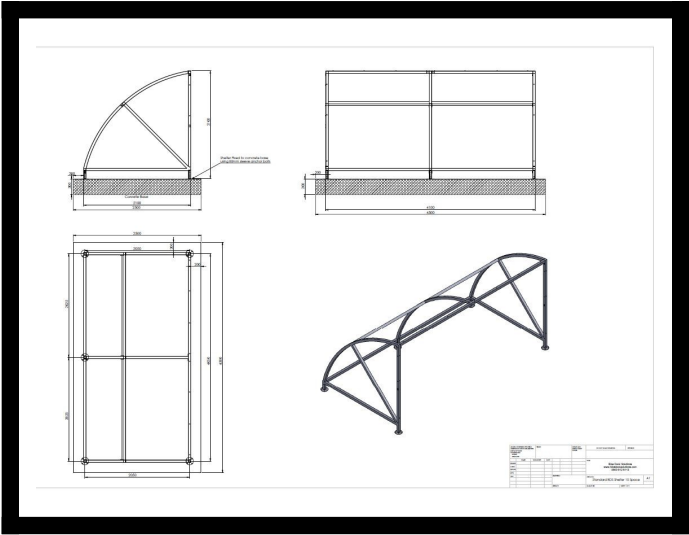
BDS Cycle Shelter - 10 Space Cycle Shelter & Bike Stands

TOTAL Inc. VAT:
\$2,432.10

*Base price, not including any custom options.

Product Images





Our best selling cycle shelter, comes with all-round features to suit any environment and is also used and approved by Transport for London. Mild steel cycle shelter with bolt down fixing or underground fixing available. The Bike Shelter is available in a galvanised, polyester powder coated RAL code colour finish or hot dipped galvanised and polyester powder coated RAL code colour finish. Anti-vandal clear polycarbonate UV stable roof, with optional polycarbonate sides and swing or sliding gates. Comes with optional cycle parking, galvanised bike stands for secure bike parking and to provide confidence to cyclists by allowing both the frame and wheels to be secured to the cycle stand.

Specification

- Tested and approved to Transport for London Health and Safety standards and their Cycle Shelter of choice.
- Recommended for Schools, Colleges, Universities, Offices and Public Buildings.
- An extremely durable and resilient shelter, it has been structurally tested against the harshest conditions found in the UK and approved against BS EN standards
- Optional end polycarbonate panels to provide additional protection from the elements or to restrict access
- Optional cycle parking bike stands, hot dipped galvanised. Integrated bike racks are for where your surface is loose, so the racks are installed inside the shelter and lifted off the floor. Toastracks only require a few bolt holes (compared to bike stands) so they are quicker to install, frames that are bolted onto the floor to park bikes.
- Optional assembly bolts, expanding foundation bolts for concrete plinth and arrangement drawing for assembly
- No-crawl under perimeter with adjustable feet and allows for fixing onto uneven surfaces
- Complies with secure storage as required by the Code for Sustainable Homes
- 50mm box tube to BS EN standards
- Frame comes with optional finishes. Raw, hot dipped galvanised or polyester powder coated to BS EN ISO 1461:1999 standard finish - any RAL code colour. Or both which is recommended.
- Shelter comes with adjustable overground fixing feet
- Single units can be placed alongside or opposite each other, to form larger cycle storage areas.
- Shelters and Enclosure come with latch and coded padlocks.
 - Optional lock with 2 keys
 - Or ask us about our swipe card ID locking system
- This bike shelter can help contribute towards gaining ENE8 Cycle storage credits when used in the appropriate situation, under the Code for Sustainable Homes

10 Bike Space BSC1 (2110): Length 4100mm Height 2200mm Width 2100mm

Typical delivery time: 2 to 4 weeks

Other sizes available -

- [6/8 Space Shelter](#)
- [16 Space Shelter](#)
- [10 Space Shelter](#)
- [20 Space Shelter](#)
- [30 Space Shelter](#)
- [20 Space Enclosure](#)
- [20 Space Shelter](#)
- [40 Space Enclosure](#)

Or view our Full Range of Enclosures, Shelters or Bike Storage.

CODE: BDS0022

Additional Information

Best Sellers M2	Yes
-----------------	-----

Additional Options

Bike Stands	None	\$0.00
	5 Galvanised Bike Stands (10 Bikes)	\$208.00
	Integrated Bike Rack, installed into shelter frame, off ground (10 Bikes)	\$1,331.00
	Toastrack, free standing, floor mounted frame (10 Bikes)	\$1,690.37
Choose Finish	None (I'll apply my own finish to metal)	\$0.00
	Galvanised and Powder Coated Colour	\$813.24
	Galvanised	\$813.24
	Powder Coated Colour	\$726.00
RAL Colour Code	1023 Traffic Yellow	\$0.00
	3000 Flame Red	\$0.00
	5002 Ultramarine Blue	\$0.00
	5017 Traffic Blue	\$0.00
	6005 Moss Green	\$0.00
	7015 Slate Grey	\$0.00
	6024 Traffic Green	\$0.00
	9005 Jet Black	\$0.00
	9010 Pure White	\$0.00
	Custom Colour	\$266.20
Custom Colour		\$0.00
Gates Option	None	\$0.00
	Swing Gates with Steel Mesh Panels	\$1,364.28
	Sliding Gates with Steel Mesh Panels	\$2,258.16
	Swing gates, with polycarbonate panels	\$1,176.36
	Sliding gates, with polycarbonate panels	\$1,976.84
Security Options	None	\$0.00

	Coded Padlock (Only available if Gates are selected)	\$66.55
	Lock and 2 Keys (Only available on Swing Gates)	\$179.69
	Swipe card system (10 cards)	\$865.15
Lighting Options	None	\$0.00
	Built-in solar LED lighting	\$332.75
Polycarbonate Side Panels	None	\$0.00
	Polycarbonate Side Panels	\$532.40
Polycarbonate Fixing Strap	None	\$0.00
	Yes, central glazing strap to cover where polycarbonate sheets meet	\$133.10
Fixing Bolts	No, I have my own bolts	\$0.00
	Fixing Bolts	\$66.55

