



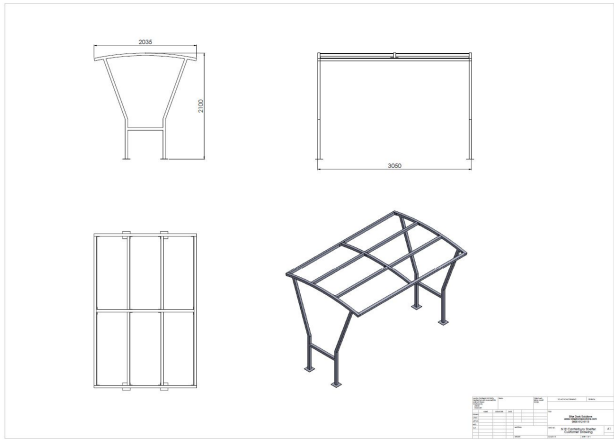
# Canterbury Cycle Shelter

TOTAL Inc. VAT:  
**\$7,260.00**

\*Base price, not including any custom options.

## Product Images





## Description

---

A superb looking and strong cycle shelter for all environments.

Specification

- A free-standing single-sided solution for all locations
- The frame is made of robust, steel tube and section
- Polycarbonate clear anti vandal roofh
- 4 bike stands to park 8 bikes as standard - Hot Dipped Galvanised
- All galvanising to BS EN ISO 1461
- Overall length 3450mm
- Centres 3150mm
- Depth 2670mm
- Front height 2144mm
- Back height 2144mm

Installation

Supplied in component form for easy installation on site. Cladding/roofing needs to be drilled/fixed on site. Legs can be flanged for bolting down to a suitable concrete base (400mm cube minimum), or with ragged ends for casting into the ground.

Delivery time:14 - 28 working days

## Additional Information

---

Best Sellers M2	No
-----------------	----

# Additional Options

Finish	Powder Coated Colour	\$0.00
	Galvanised	\$332.75
	Galvanised and powder coated colour	\$332.75
RAL Colour Code	1023 Traffic Yellow	\$0.00
	3000 Flame Red	\$0.00
	5002 Ultramarine Blue	\$0.00
	5017 Traffic Blue	\$0.00
	6005 Moss Green	\$0.00
	7015 Slate Grey	\$0.00
	6024 Traffic Green	\$0.00
	9005 Jet Black	\$0.00
	9010 Pure White	\$0.00
	Custom Colour	\$266.20
Custom Colour		\$0.00
Bolts Pack - Fixing and Assembly	None	\$0.00
	Bolts Pack - Fixing and Assembly	\$53.24

